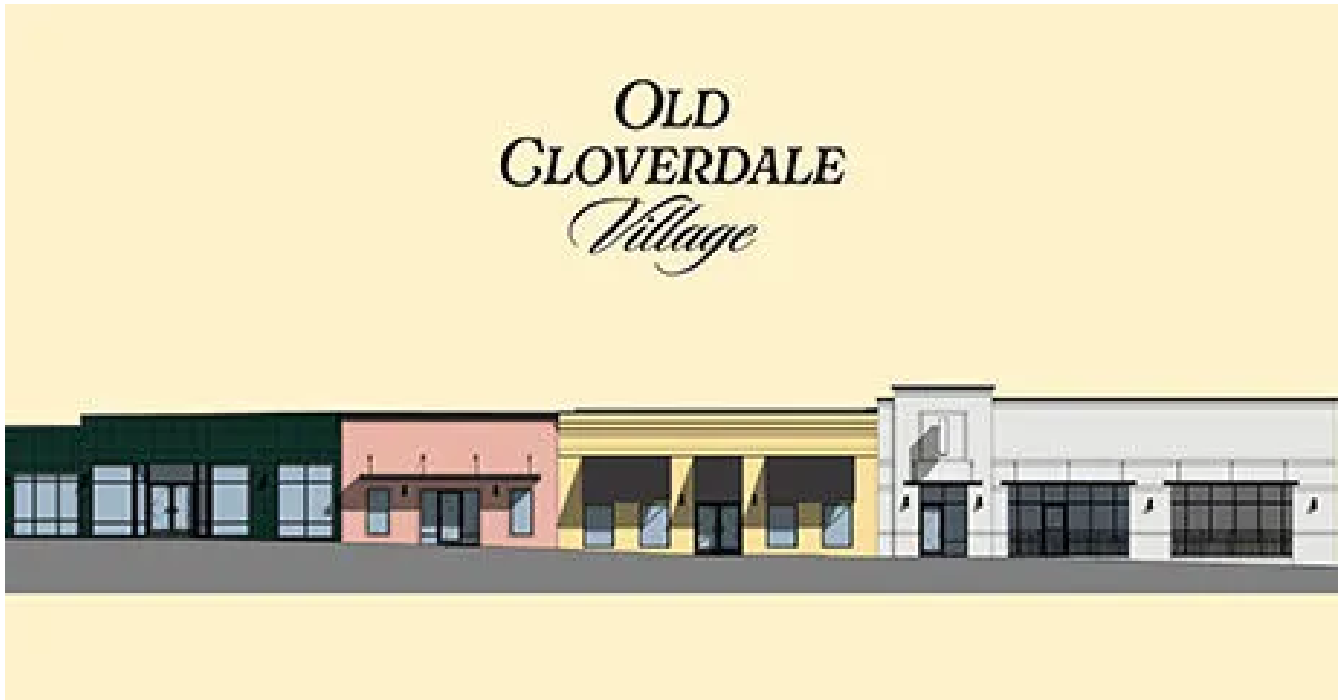




# New development bringing Big Bad Breakfast to Montgomery's Old Cloverdale District



BY CALEB TURRENTINE · LAST UPDATED MAY 12, 2025



Renovations will create a new retail property in Cloverdale. (CCR Architecture & Interiors)

Big Bad Breakfast is continuing to expand in Alabama, this time signing on as a tenant for a new development in our capital city.

[Montgomery's Old Cloverdale District](#) is home to several locally owned restaurants + shops along with art galleries, an independent arts cinema and a community theater. One strip of buildings is currently taking on a full restoration.

The space is 11,000 square feet with four total storefronts. Big Bad Breakfast is the first confirmed tenant, leaving three suites still available.



Cloverdale neighborhood in Montgomery. (Caleb Turrentine / The Bama Buzz)

The storefront will be located along East Fairview Avenue across from the Capri Theatre.

Along with the building's restoration, the City of Montgomery and the project's development team are collaborating on an improvement plan for existing infrastructure surrounding the property, including:

- Updated exterior lighting
- Landscaping
- Additional sidewalks

The redevelopment project is scheduled to be fully complete in the fourth quarter.

The development is through a partnership between Birmingham-based The FiveStone Group, Bayer Ventures and New York City-based D&A Cos. The project team comprises CCR Architecture & Interiors, Pilgreen and Bostick Engineering Inc. and Prier Construction. The partnership also includes Fresh Hospitality and Charles Morgan.